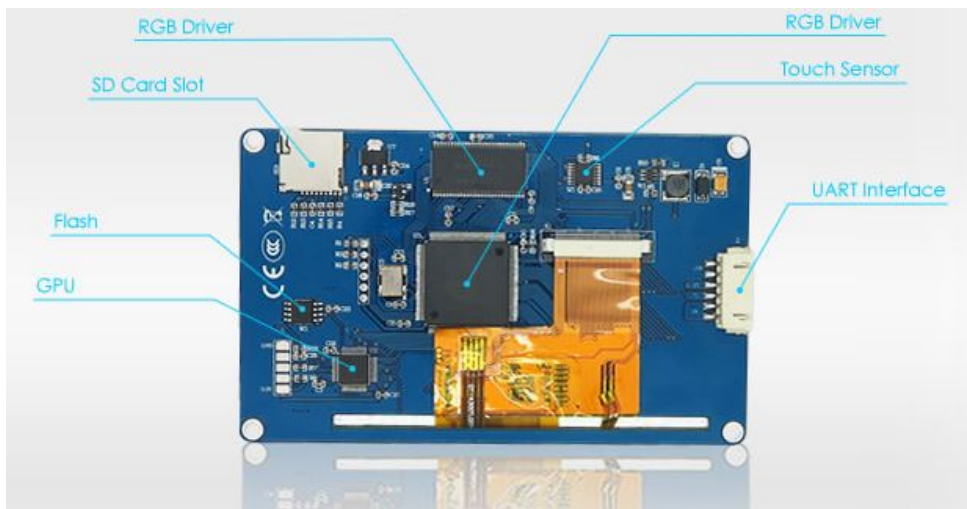


Nextion-4.3"



Records

Date	Description
2015-05-21	Nextion Hardware Manual

•Nextion Models

Nextion Type	Basic
Nextion Models	NX3224T024_011N (N: No touch)
	NX3224T024_011R (R: Resistive touchscreen)

•Spec

	Data	Description
Color	65K (65536) colors	16 bit, 5R6G5B
Layout Size	120(L)×74(W)×5(H)	TJC4827T043_011N
	120(L)×74(W)×6.2(H)	TJC4827T043_011R
Active Area (A.A.)	105.50mm(L)×67.20mm(W)	480×272 pixel
Visual Area (V.A.)	95.04mm(L)×53.86mm(W)	480×272 pixel
Resolution	480×272 pixel	Also can be set as 272×480
Touch type	Resistive	
Touches	> 1 million	
Backlight	LED	-
Backlight lifetime (Average)	>30,000 Hours	
Brightness	250nit(NX4827T043_011N)	0% to 100%, the interval of adjustment is 1%
	230 nit(NX4827T043_011R)	0% to 100%, the interval of adjustment is 1%
Weight	79.3g(NX4827T043_011N)	
	93.8g(NX4827T043_011R)	

•Electronic Characteristics

	Test Conditions	Min	Typical	Max	Unit
Operating Voltage		4.75	5	7	V
Operating Current	VCC=+5V, Brightness is 100%	-	250	-	mA
	SLEEP Mode		20		mA
Power supply recommend: 5V, 500mA, DC					

•Working Environment & Reliability Parameter

	Test Environment	Min	Typical	Max	Unit
Working Temperature	5V, Humidity 60%	-20	25	70	°C
Storage Temperature	-	-30	25	85	°C
Working Humidity	25°C	10%	60%	90%	RH

•Interfaces Performance

	Test Conditions	Min	Typical	Max	Unit
Serial Port Baudrate	标准	2400	9600	115200	bps
Serial Port Output (TXD)	输出 1, Iout=1mA	3.0	3.2	-	V
	输出 0, Iout=-1mA	-	0.1	0.2	V
Serial Port Input (RXD)	输出 1, Iout=1mA	2.0	3.3	5.0	V
	输出 0, Iout=-1mA	-0.7	0.0	1.3	V
Serial Port Mode	TTL				
Serial Port	4Pin_2.54mm				
USB interface	No				
SD card socket	Yes (FAT32 format), support 2G MicroTF/SD 卡				

•Memory Features

Memory Type	Description	Min	Typical	Max	Unit
FLASH Memory	Store fonts and images	-		16	MB
RAM Memory	Store variables	-	2048	-	BYTE

•Product Dimension

