



# CE EMC TEST REPORT

**Product :** Sonoff GSM/GPRS Smart Switch

**Trademark :** 

Sonoff G1

**Model Name :** Sonoff G2, Sonoff G12, Sonoff G14, Sonoff G16,  
Sonoff G18, Sonoff G22, Sonoff G24, Sonoff G26,  
Sonoff G28

**Report No. :** BCTC-FY170603852-2E

## Prepared for

**ITEAD Intelligent Systems Co., Ltd**

5F, Building A, Yuxing Multiple-use Building, Huaya Industrial Park, Jihua Road.,  
Longhua Dist, Shenzhen, GD, 518000, China

## Prepared by

**Shenzhen BCTC Testing Co., Ltd.**

BCTC Building & 1-2F, East of B Building, Pengzhou Industrial, Fuyuan 1st  
Road, Qiaotou Community, Fuyong Street, Bao'an District, Shenzhen, China

Tel: 400-788-9558, 0755-33019988


Web: [Http://www.bctc-lab.com.cn](http://www.bctc-lab.com.cn)

**TEST RESULT CERTIFICATION**

**Applicant's name** ..... : ITEAD Intelligent Systems Co., Ltd  
**Address** ..... : 5F, Building A, Yuxing Multiple-use Building, Huaya Industrial Park, Jihua Road., Longhua Dist, Shenzhen, GD, 518000, China  
**Manufacture's Name** ..... : ITEAD Intelligent Systems Co., Ltd  
**Address** ..... : 5F, Building A, Yuxing Multiple-use Building, Huaya Industrial Park, Jihua Road., Longhua Dist, Shenzhen, GD, 518000, China

**Product description**

**Product name** ..... : Sonoff GSM/GPRS Smart Switch

**Trademark** ..... : 

**Model and/or type reference** : Sonoff G1  
Sonoff G2, Sonoff G12, Sonoff G14, Sonoff G16,  
Sonoff G18, Sonoff G22, Sonoff G24, Sonoff G26,  
Sonoff G28

**Standards** ..... : Draft ETSI EN 301 489-1 V2.2.0 (2017-03)  
Final draft ETSI EN 301 489-3 V2.1.1 (2017-03)  
ETSI EN 301 489-7 V1.3.1 (2005-11)

This device described above has been tested by BCTC, and the test results show that the equipment under test (EUT) is in compliance with the 2014/53/EU RED Art.3.1(b) requirements. And it is applicable only to the tested sample identified in the report.

This report shall not be reproduced except in full, without the written approval of BCTC, this document may be altered or revised by BCTC, personal only, and shall be noted in the revision of the document.

**Date of Test** ..... :

**Date (s) of performance of tests** ..... : Jul. 14 - Jul. 19, 2017

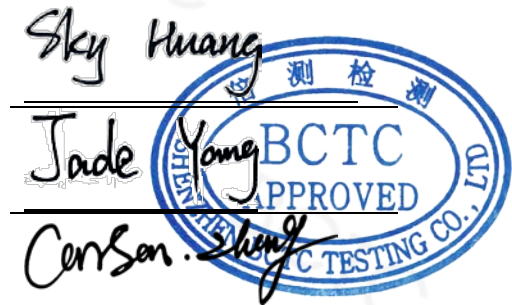
**Date of Issue** ..... : Jul. 19, 2017

**Test Result** ..... : **Pass**

**Prepared by(Engineer):** Sky Huang

**Reviewer(Supervisor):** Jade Yang

**Approved(Manager):** Carson Zhang



*This test report is based on a single evaluation of one sample of above mentioned products. It is not permitted to be duplicated in extracts without written approval of Shenzhen BCTC Testing Co., Ltd.*

**TABLE OF CONTENT**

	Page
1 . TEST SUMMARY	5
1.1 TEST FACILITY	6
1.2 MEASUREMENT UNCERTAINTY	6
2 . GENERAL INFORMATION	7
2.1 DESCRIPTION OF TEST MODES	8
2.2 DESCRIPTION OF TEST SETUP	8
2.3 DESCRIPTION TEST PERIPHERAL AND EUT PERIPHERAL	8
2.4 MEASUREMENT INSTRUMENTS LIST	9
3 . EMC EMISSION TEST	10
3.1 CONDUCTED EMISSION MEASUREMENT	10
3.1.1 POWER LINE CONDUCTED EMISSION	10
3.1.2 TEST PROCEDURE	11
3.1.3 TEST SETUP	11
3.1.4 EUT OPERATING CONDITIONS	11
3.1.5 TEST RESULTS	12
3.2 RADIATED EMISSION MEASUREMENT	14
3.2.1 LIMITS OF RADIATED EMISSION MEASUREMENT	14
3.2.2 LIMITS OF RADIATED EMISSION MEASUREMENT	14
3.2.3 TEST PROCEDURE	14
3.2.4 TEST SETUP	15
3.2.5 EUT OPERATING CONDITIONS	15
3.2.6 TEST RESULTS (30-1000MHz)	16
3.2.1 LIMITS OF HARMONICS CURRENT	18
3.2.1.1 TEST PROCEDURE	19
3.2.1.2 EUT OPERATING CONDITIONS	19
3.2.1.3 TEST SETUP	19
3.2.2 TEST RESULTS	20
3.2.3 LIMITS OF VOLTAGE FLUCTUATION AND FLICKERS	21
3.2.3.1 TEST PROCEDURE	21
3.2.3.2 EUT OPERATING CONDITIONS	21
3.2.3.3 TEST SETUP	21
3.2.4 TEST RESULTS	22
4 . EMC IMMUNITY TEST	23
4.1 GENERAL PERFORMANCE CRITERIA	23
4.1.1 PERFORMANCE CRITERIA	23



4.2 GENERAL PERFORMANCE CRITERIA TEST SETUP	24
4.3 ESD TESTING	25
4.3.1 TEST SPECIFICATION	25
4.3.2 TEST PROCEDURE	25
4.3.3 TEST SETUP	26
4.3.4 TEST RESULTS	27
4.4 RS TESTING	28
4.4.1 TEST SPECIFICATION	28
4.4.2 TEST PROCEDURE	28
4.4.3 TEST SETUP	29
4.4.4 TEST RESULTS	30
4.5 EFT/BURST TESTING	31
4.5.1 TEST SPECIFICATION	31
4.5.2 TEST PROCEDURE	31
4.5.3 TEST SETUP	32
4.5.4 TEST RESULTS	33
4.6 SURGE TESTING	34
4.6.1 TEST SPECIFICATION	34
4.6.2 TEST PROCEDURE	34
4.6.3 TEST SETUP	35
4.6.4 TEST RESULTS	36
4.7 INJECTION CURRENT TESTING	37
4.7.1 TEST SPECIFICATION	37
4.7.2 TEST PROCEDURE	37
4.7.3 TEST SETUP	38
4.7.4 TEST RESULTS	39
4.8 VOLTAGE INTERRUPTION/DIPS TESTING	40
4.8.1 TEST SPECIFICATION	40
4.8.2 TEST PROCEDURE	40
4.8.3 TEST SETUP	40
4.8.4 TEST RESULTS	41
5 PHOTOS OF TEST SETUP	42
6 PHOTOS OF THE EUT	45



## 1. TEST SUMMARY

Test Procedures According To The Technical Standards:

Draft ETSI EN 301 489-1 V2.2.0 (2017-03)

Final draft ETSI EN 301 489-3 V2.1.1 (2017-03)

ETSI EN 301 489-7 V1.3.1 (2005-11)

EMC Emission				
Standard	Test Item	Limit	Judgment	Remark
EN 55022:2010	Conducted Emission	Class B	PASS	
	Radiated Emission	Class B	PASS	
EN 61000-3-2:2014	Harmonic Current Emission	Class A or D NOTE (2)	N/A	
EN 61000-3-3:2013	Voltage Fluctuations & Flicker	-----	PASS	
EMC Immunity				
Section EN 55024:2010	Test Item	Performance Criteria	Judgment	Remark
EN 61000-4-2:2009	Electrostatic Discharge	B	PASS	
EN 61000-4-3: 2006+A1:2008+A2:2010	RF electromagnetic field	A	PASS	
EN 61000-4-4:2012	Fast transients	B	PASS	
EN 61000-4-5:2014	Surges	B	PASS	
EN 61000-4-6:2014	Injected Current	A	PASS	
EN 61000-4-8:2010	Power Frequency Magnetic Field	A	N/A	
EN 61000-4-11:2004	Volt. Interruptions Volt. Dips	B / C / C NOTE (3)	PASS	

### NOTE:

(1) "N/A" denotes test is not applicable in this Test Report

(2) The power consumption of EUT is less than 75W and no Limits apply.

(3) Voltage dip: 100% reduction – Performance Criteria **B**

Voltage dip: 30% reduction – Performance Criteria **C**

Voltage Interruption: 100% Interruption – Performance Criteria **C**

(4) For client's request and manual description, the test will not be executed.



## 1.1 TEST FACILITY

Shenzhen BCTC Testing Co., Ltd.

Add. : BCTC Building & 1-2F, East of B Building, Pengzhou Industrial, Fuyuan 1st Road, Qiaotou Community, Fuyong Street, Bao'an District, Shenzhen, China

## 1.2 MEASUREMENT UNCERTAINTY

The reported uncertainty of measurement  $y \pm U$ , where expanded uncertainty  $U$  is based on a standard uncertainty multiplied by a coverage factor of  $k=2$ , providing a level of confidence of approximately 95 %.

### A. Conducted Measurement :

Method	Measurement Frequency Range	U , (dB)	NOTE
ANSI	150 KHz ~ 30MHz	3.2	


### B. Radiated Measurement :

Method	Measurement Frequency Range	U , (dB)	NOTE
ANSI	30MHz ~ 1000MHz	4.7	
	1GHz ~6000GHz	5.0	



## 2. GENERAL INFORMATION

### 2.1 GENERAL DESCRIPTION OF EUT

EUT Name	:	Sonoff GSM/GPRS Smart Switch
Model No.	:	Sonoff G1
Serial Model	:	Sonoff G2, Sonoff G12, Sonoff G14, Sonoff G16, Sonoff G18, Sonoff G22, Sonoff G24, Sonoff G26, Sonoff G28
Model Difference	:	The product is different for model number and outlook color.
Trademark	:	
Power supply	:	90V~250V AC 50Hz-60Hz 3000W 16A
Operation frequency	:	GSM: 900/1800Mhz GPS: 1.57542GHz
Modulation	:	GSM / DCS: GMSK GMSK
Antenna Type	:	Internal antenna
Intend use environment	:	Residential, commercial and light industrial environment

Note:

1. For a more detailed features description, please refer to the manufacturer's specifications or the User's Manual.



## 2.1 DESCRIPTION OF TEST MODES

To investigate the maximum EMI emission characteristics generated from EUT, the test system was pre-scanning tested based on the consideration of following EUT operation mode or test configuration mode which possibly have effect on EMI emission level. Each of these EUT operation mode(s) or test configuration mode(s) mentioned above was evaluated respectively.


For all Test Mode	Description
Mode 1	Tx+Rx Mode

## 2.2 DESCRIPTION OF TEST SETUP

EUT

## 2.3 DESCRIPTION TEST PERIPHERAL AND EUT PERIPHERAL

The EUT has been tested as an independent unit together with other necessary accessories or support units. The following support units or accessories were used to form a representative test configuration during the tests.

Item	Equipment	Mfr/Brand	Model/Type No.	Series No.	Note
E-1	Sonoff GSM/GPRS Smart Switch		Sonoff G1	N/A	EUT

Item	Shielded Type	Ferrite Core	Length	Note
C1	N/A	N/A	0.8M	

Note:

- (1) The support equipment was authorized by Declaration of Confirmation.
- (2) For detachable type I/O cable should be specified the length in cm in 『Length』 column.



## 2.4 MEASUREMENT INSTRUMENTS LIST

### 2.4.1 CONDUCTED EMISSION

Item	Kind of Equipment	Manufacturer	Type No.	Serial No.	Calibrated until
1	LISN	R&S	ENV216	101313	Aug. 25, 2017
2	LISN	EMCO	3816/2	00042990	Aug. 25, 2017
3	50Ω Switch	ANRITSU CORP	MP59B	6200983704	Aug. 25, 2017
4	Test Cable	N/A	C01	N/A	Aug. 25, 2017
5	EMI Test Receiver	R&S	ESCI	101160	Aug. 25, 2017

### 2.4.2 RADIATED TEST SITE

Item	Kind of Equipment	Manufacturer	Type No.	Serial No.	Calibrated until
1	Bilog Antenna	TESEQ	CBL6111D	31216	Aug. 25, 2017
2	Test Cable	N/A	R-01	N/A	Aug. 25, 2017
3	Test Cable	N/A	R-02	N/A	Aug. 25, 2017
4	EMI Test Receiver	R&S	ESCI-7	101318	Aug. 25, 2017
5	Antenna Mast	EM	SC100_1	N/A	N/A
6	Turn Table	EM	SC100	060531	N/A
7	50Ω Switch	Anritsu Corp	MP59B	6200983705	Aug. 25, 2017
8	Spectrum Analyzer	Aglient	E4407B	MY45108040	Aug. 25, 2017
9	Horn Antenna	EM	EM-AH-1018 0	2011071402	Aug. 25, 2017
10	Amplifier	EM	EM-30180	060538	Aug. 25, 2017

### 2.4.3 ESD

Item	Kind of Equipment	Manufacturer	Type No.	Serial No.	Calibrated until
1	ESD TEST GENERATOR	EVERFINE	EMS61000-2 A-V200	11040001T	Aug. 25, 2017

### 2.4.4 RS

Item	Kind of Equipment	Manufacturer	Type No.	Serial No.	Calibrated until
1	Signal Generator	R&S	SMT 06	832080/007	Aug. 25, 2017
2	Log-Bicon Antenna	Schwarzbeck	VULB9161	4022	Aug. 25, 2017
3	Power Amplifier	AR	150W1000M1	320946	Aug. 25, 2017
4	Microwave Horn Antenna	AR	AT4002A	321467	Aug. 25, 2017
5	Power Amplifier	AR	25S1G4A	308598	Aug. 25, 2017



### 3. EMC EMISSION TEST

#### 3.1 CONDUCTED EMISSION MEASUREMENT

##### 3.1.1 POWER LINE CONDUCTED EMISSION (Frequency Range 150KHz-30MHz)

FREQUENCY (MHz)	Class A (dBuV)		Class B (dBuV)	
	Quasi-peak	Average	Quasi-peak	Average
0.15 -0.5	79.00	66.00	66 - 56 *	56 - 46 *
0.50 -5.0	73.00	60.00	56.00	46.00
5.0 -30.0	73.00	60.00	60.00	50.00

Note:

- (1) The tighter limit applies at the band edges.
- (2) The limit of " \* " marked band means the limitation decreases linearly with the logarithm of the frequency in the range.

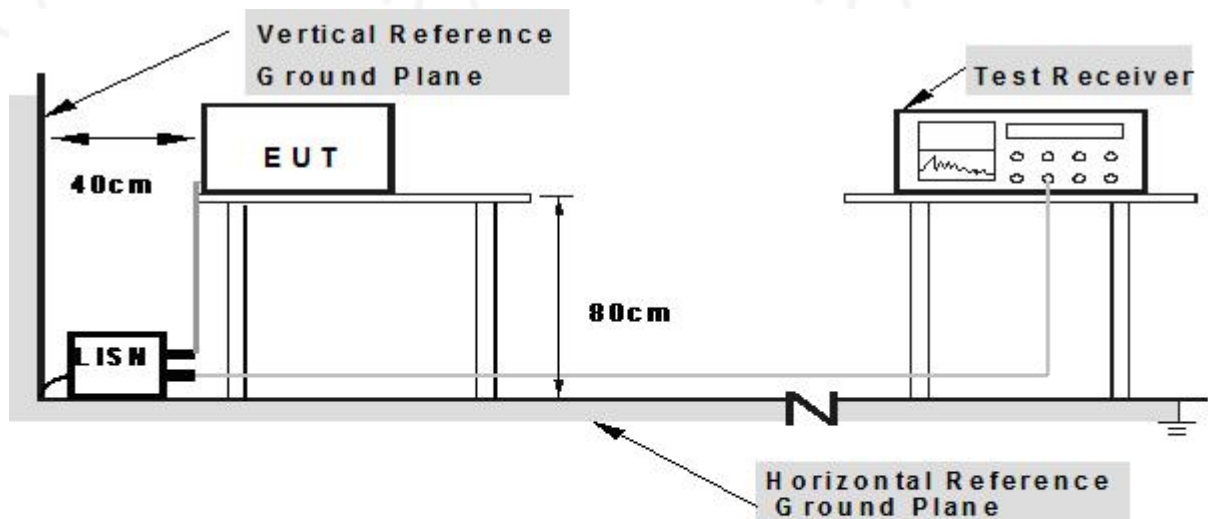
The following table is the setting of the receiver

Receiver Parameters	Setting
Attenuation	10 dB
Start Frequency	0.15 MHz
Stop Frequency	30 MHz
IF Bandwidth	9 kHz

### 3.1.2 TEST PROCEDURE

- The EUT was placed 0.4 meters from the horizontal ground plane with EUT being connected to the power mains through a line impedance stabilization network (LISN). All other support equipments powered from additional LISN(s). The LISN provide 50 Ohm/ 50uH of coupling impedance for the measuring instrument.
- Interconnecting cables that hang closer than 40 cm to the ground plane shall be folded back and forth in the center forming a bundle 30 to 40 cm long.
- I/O cables that are not connected to a peripheral shall be bundled in the center. The end of the cable may be terminated, if required, using the correct terminating impedance. The overall length shall not exceed 1 m.
- LISN at least 80 cm from nearest part of EUT chassis.
- For the actual test configuration, please refer to the related Item –EUT Test Photos.

### 3.1.3 TEST SETUP



**Note: 1.Support units were connected to second LISN.**

**2.Both of LISNs (AMN) are 80 cm from EUT and at least 80 from other units and other metal planes**

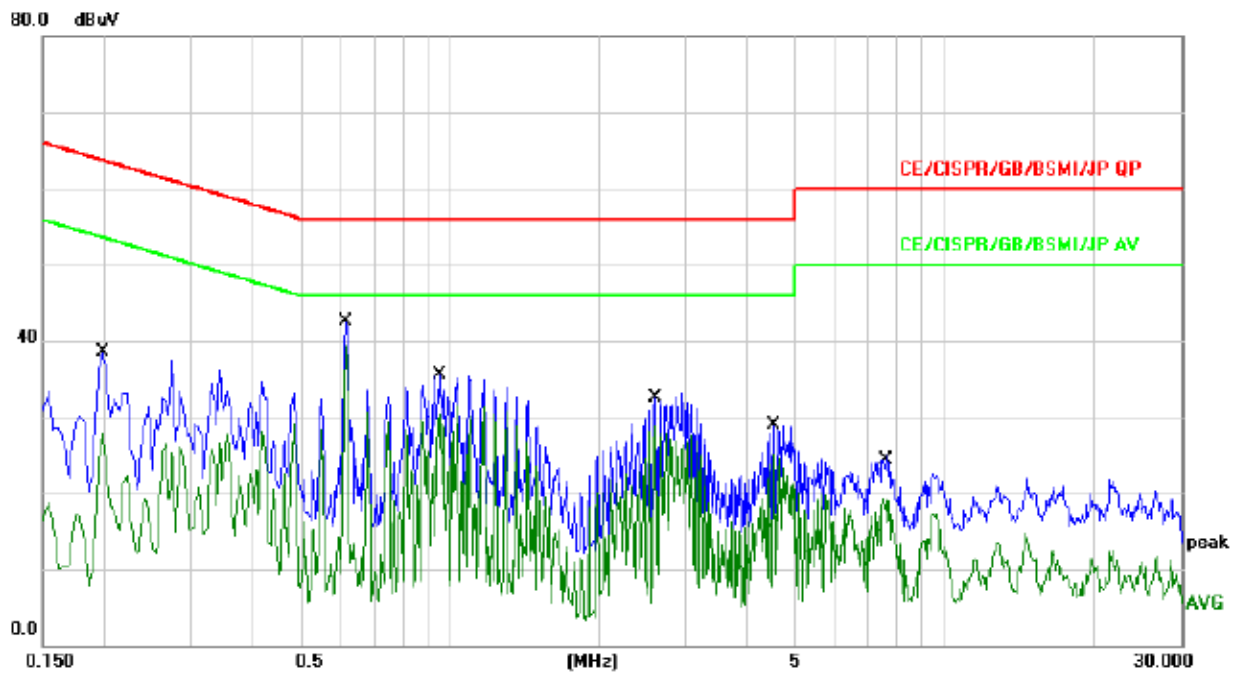
### 3.1.4 EUT OPERATING CONDITIONS

The EUT tested system was configured as the statements of **2.2** Unless otherwise a special operating condition is specified in the follows during the testing.



## 3.1.5 TEST RESULTS

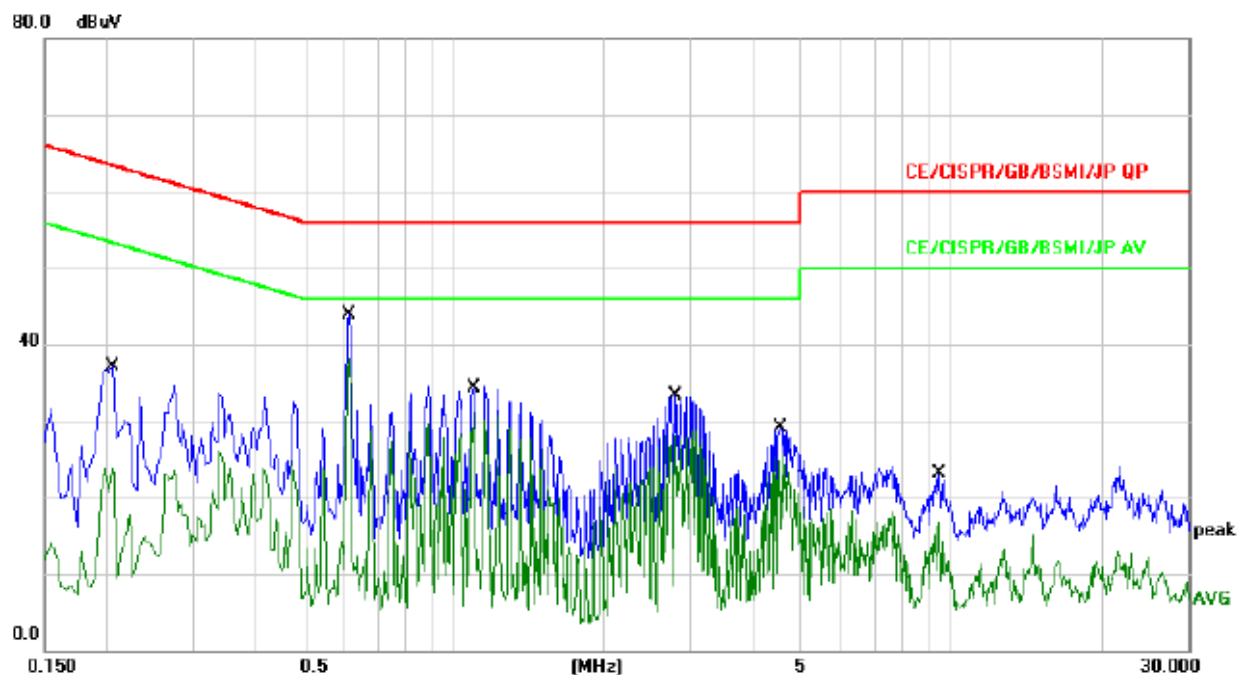
EUT :	Sonoff GSM/GPRS Smart Switch	Model Name. :	Sonoff G1
Temperature :	26 °C	Relative Humidity :	54%
Pressure :	1010hPa	Phase :	L
Test Voltage :	AC 230V/50Hz	Test Mode :	Mode 1



No.	Mk.	Freq. MHz	Reading Level dBuV	Correct Factor dB	Measure- ment dBuV	Limit dBuV	Over dB	Detector	Comment
1		0.1980	28.83	9.65	38.48	63.69	-25.21	QP	
2		0.1980	18.20	9.65	27.85	53.69	-25.84	AVG	
3		0.6140	32.88	9.68	42.56	56.00	-13.44	QP	
4	*	0.6140	29.61	9.68	39.29	46.00	-6.71	AVG	
5		0.9540	25.78	9.69	35.47	56.00	-20.53	QP	
6		0.9540	21.79	9.69	31.48	46.00	-14.52	AVG	
7		2.5980	23.31	9.72	33.03	56.00	-22.97	QP	
8		2.5980	19.13	9.72	28.85	46.00	-17.15	AVG	
9		4.5060	19.16	9.73	28.89	56.00	-27.11	QP	
10		4.5060	15.45	9.73	25.18	46.00	-20.82	AVG	
11		7.5180	15.12	9.81	24.93	60.00	-35.07	QP	
12		7.5180	9.58	9.81	19.39	50.00	-30.61	AVG	



EUT :	Sonoff GSM/GPRS Smart Switch	Model Name. :	Sonoff G1
Temperature :	26 °C	Relative Humidity :	54%
Pressure :	1010hPa	Phase :	N
Test Voltage :	AC 230V/50Hz	Test Mode :	Mode 1



No.	Mk.	Freq.	Reading	Correct	Measure-	Limit	Over		
		MHz	Level	Factor	ment			Detector	Comment
			dBuV	dB	dBuV	dBuV	dB		
1		0.2060	27.44	9.65	37.09	63.36	-26.27	QP	
2		0.2060	14.02	9.65	23.67	53.36	-29.69	AVG	
3		0.6140	34.21	9.68	43.89	56.00	-12.11	QP	
4	*	0.6140	28.44	9.68	38.12	46.00	-7.88	AVG	
5		1.0980	24.82	9.69	34.51	56.00	-21.49	QP	
6		1.0980	21.50	9.69	31.19	46.00	-14.81	AVG	
7		2.7860	23.52	9.72	33.24	56.00	-22.76	QP	
8		2.7860	19.07	9.72	28.79	46.00	-17.21	AVG	
9		4.5380	19.41	9.73	29.14	56.00	-26.86	QP	
10		4.5380	15.97	9.73	25.70	46.00	-20.30	AVG	
11		9.4900	13.26	9.82	23.08	60.00	-36.92	QP	
12		9.4900	6.91	9.82	16.73	50.00	-33.27	AVG	



### 3.2 RADIATED EMISSION MEASUREMENT

#### 3.2.1 LIMITS OF RADIATED EMISSION MEASUREMENT (Below 1000MHz)

FREQUENCY (MHz)	Class A (at 10m)	Class B (at 10m)
	dBuV/m	dBuV/m
30 – 230	40	30
230 – 1000	47	37

#### 3.2.2 LIMITS OF RADIATED EMISSION MEASUREMENT (Above 1000MHz)

FREQUENCY (MHz)	Class A (at 10m) dBuV/m		Class B (at 10m) dBuV/m	
	Peak	Avg	Peak	Avg
1000-3000	76	56	70	50
3000-6000	80	60	74	54

Notes:

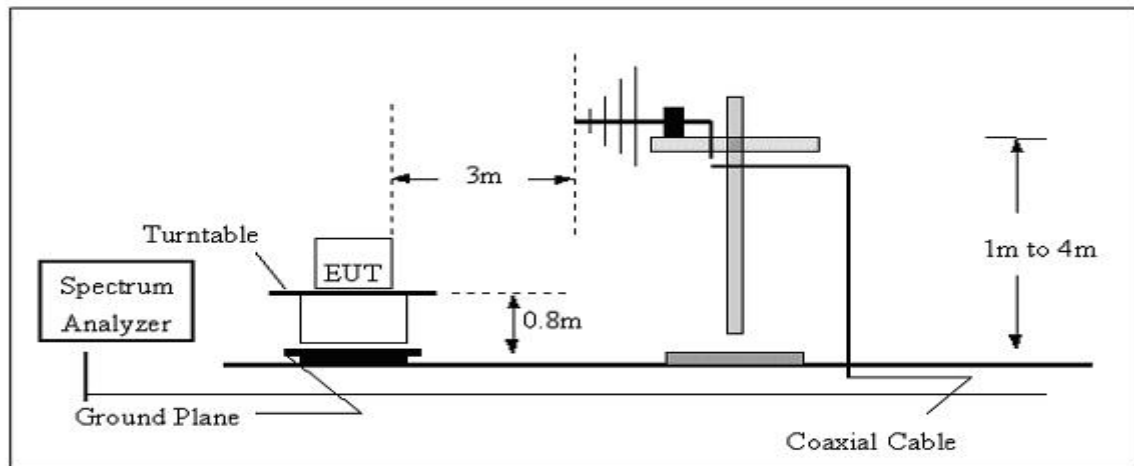
- (1) The limit for radiated test was performed according to as following:  
CISPR 22/ FCC PART 15B /ICES-003.
- (2) The tighter limit applies at the band edges.
- (3) Emission level (dBuV/m)=20log Emission level (uV/m).

#### 3.2.3 TEST PROCEDURE

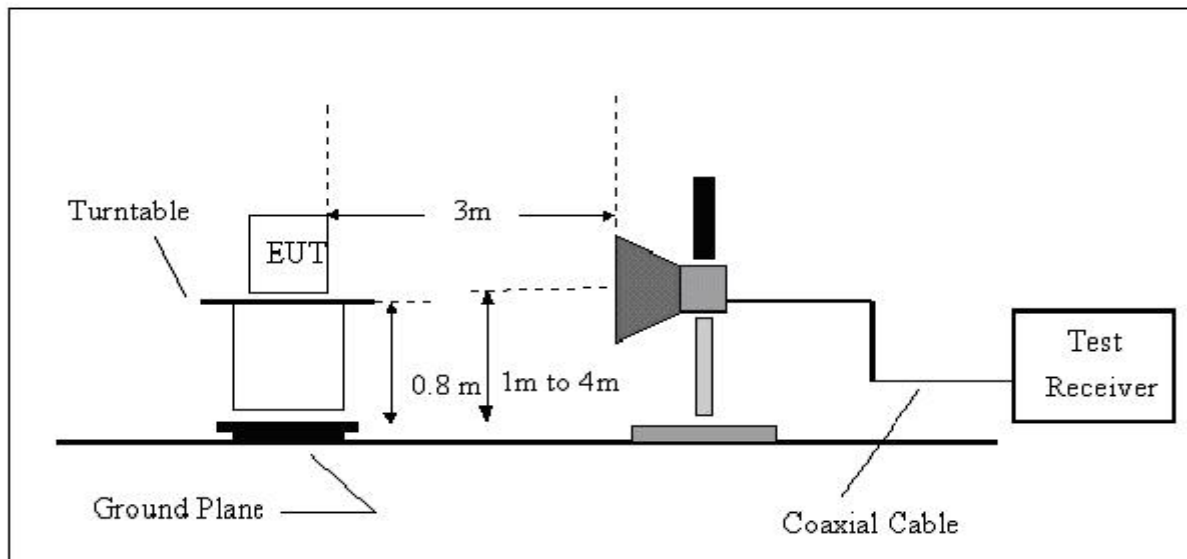
- a. The measuring distance of at 10 m shall be used for measurements at frequency up to 1GHz. For frequencies above 1GHz, any suitable measuring distance may be used.
- b. The EUT was placed on the top of a rotating table 0.8 meters above the ground at a 10 meter open area test site. The table was rotated 360 degrees to determine the position of the highest radiation.
- c. The height of the equipment or of the substitution antenna shall be 0.8 m; the height of the test antenna shall vary between 1 m to 4 m. Both horizontal and vertical polarizations of the antenna are set to make the measurement.
- d. The initial step in collecting conducted emission data is a spectrum analyzer peak detector mode pre-scanning the measurement frequency range. Significant peaks are then marked and then Quasi Peak detector mode re-measured.
- e. If the Peak Mode measured value compliance with and lower than Quasi Peak Mode Limit, the EUT shall be deemed to meet QP Limits and then no additional QP Mode measurement performed.
- f. For the actual test configuration, please refer to the related Item –EUT Test Photos.

### 3.2.4 TEST SETUP

(A) Radiated Emission Test Set-Up, Frequency Below 1000MHz



(B) Radiated Emission Test Set-UP Frequency Over 1 GHz



### 3.2.5 EUT OPERATING CONDITIONS

The EUT tested system was configured as the statements of 2.2 Unless otherwise a special operating condition is specified in the follows during the testing.



### 3.2.6 TEST RESULTS (30-1000MHz)

EUT :	Sonoff GSM/GPRS Smart Switch	Model Name :	Sonoff G1
Temperature :	24 °C	Relative Humidity :	54%
Pressure :	1010 hPa	Polarization :	Horizontal
Test Voltage :	AC 230V/50Hz	Test Mode :	Mode 1



No.	Mk.	Freq. MHz	Reading Level dBuV	Correct Factor dB	Measure- ment dBuV/m	Limit dB/m	Over dB	Antenna Height cm	Table Degree	
							Detector		degree	Comment
1		34.2760	35.14	-17.63	17.51	40.00	-22.49	QP		
2		71.5806	38.18	-19.52	18.66	40.00	-21.34	QP		
3	*	158.6677	50.36	-19.10	31.26	40.00	-8.74	QP		
4		214.5143	42.08	-15.69	26.39	40.00	-13.61	QP		
5		285.9778	38.49	-12.46	26.03	47.00	-20.97	QP		
6		357.9287	37.27	-10.39	26.88	47.00	-20.12	QP		



EUT :	Sonoff GSM/GPRS Smart Switch	Model Name :	Sonoff G1
Temperature :	24 °C	Relative Humidity :	54%
Pressure :	1010 hPa	Polarization :	Vertical
Test Voltage :	AC 230V/50Hz	Test Mode :	Mode 1



No.	Mk.	Freq.	Reading Level	Correct Factor	Measurement	Limit	Over	Antenna Height	Table Degree	
		MHz	dBuV	dB	dBuV/m	dB/m	dB	cm	degree	Comment
1		35.4993	41.26	-17.28	23.98	40.00	-16.02	QP		
2		71.5806	39.84	-19.52	20.32	40.00	-19.68	QP		
3	*	127.2176	46.87	-19.32	27.55	40.00	-12.45	QP		
4		159.7844	43.47	-19.02	24.45	40.00	-15.55	QP		
5		245.9509	30.27	-13.91	16.36	47.00	-30.64	QP		
6		742.2587	24.44	-1.96	22.48	47.00	-24.52	QP		



### 3.2.1 LIMITS OF HARMONICS CURRENT

IEC 555-2					
Table - I			Table - II		
Equipment Category	Harmonic Order n	Max. Permissible Harmonic Current (in Amperes)	Equipment Category	Harmonic Order n	Max. Permissible Harmonic Current (in Amperes)
Non Portable Tools or TV Receivers	Odd Harmonics		TV Receivers	Odd Harmonics	
	3	2.30		3	0.80
	5	1.14		5	0.60
	7	0.77		7	0.45
	9	0.40		9	0.30
	11	0.33		11	0.17
	13	0.21		13	0.12
	15≤n≤39	0.15 · 15/n		15≤n≤39	0.10 · 15/n
	Even Harmonics			Even Harmonics	
	2	1.08		2	0.30
	4	0.43		4	0.15
	8	0.30			
	8≤n≤40	0.23 · 8/n		DC	0.05

EN 61000-3-2/IEC 61000-3-2					
Equipment Category	Max. Permissible Harmonic Current (in Amperes)	Equipment Category	Harmonic Order n	Max. Permissible Harmonic Current (in A) (mA/w)	
Class A	Same as Limits Specified in 4-2.1, Table - I, but only odd harmonics required	Class D	3	2.30	3.4
			5	1.14	1.9
			7	0.77	1.0
			9	0.40	0.5
			11	0.33	0.35
			13≤n≤39	see Table I	3.85/n
			only odd harmonics required		

### 3.2.1.1 TEST PROCEDURE

a. The EUT was placed on the top of a wooden table 0.8 meters above the ground and operated to produce the maximum harmonic components under normal operating conditions.

b. The classification of EUT is according to section 5 of EN 61000-3-2: 2014. The EUT is classified as follows:

Class A: Balanced three-phase equipment, Household appliances excluding equipment as Class D, Tools excluding portable tools, Dimmers for incandescent lamps, audio equipment, equipment not specified in one of the three other classes.

Class B: Portable tools. Portable tools.; Arc welding equipment which is not professional equipment.

Class C: Lighting equipment.

Class D: Equipment having a specified power less than or equal to 600 W of the following types: Personal computers and personal computer monitors and television receivers.

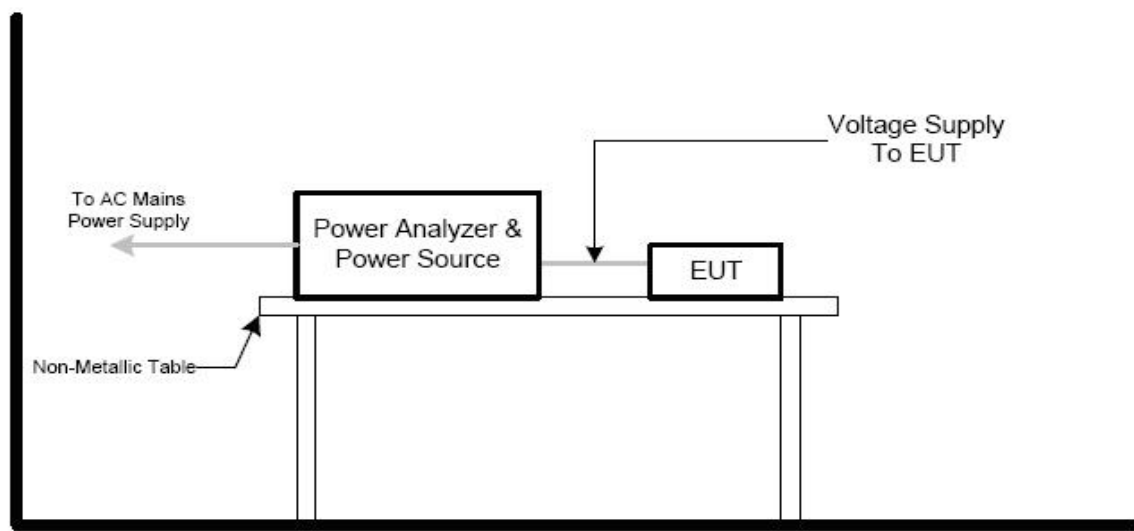
c. The correspondent test program of test instrument to measure the current harmonics emanated from EUT is chosen. The measure time shall be not less than the time necessary for the EUT to be exercised.

d. For the actual test configuration, please refer to the related item –EUT Test Photos.

### 3.2.1.2 EUT OPERATING CONDITIONS

The EUT tested system was configured as the statements of **2.2** Unless otherwise a special operating condition is specified in the follows during the testing.

### 3.2.1.3 TEST SETUP





### 3.2.2 TEST RESULTS

EUT :	Sonoff GSM/GPRS Smart Switch	Model Name :	Sonoff G1
Temperature :	25 °C	Relative Humidity :	45%
Pressure :	1010 hPa	Test Power :	AC230V/50Hz
Test Mode	Mode 1		



### 3.2.2.1 VOLTAGE FLUCTUATION AND FLICKERS

### 3.2.3 LIMITS OF VOLTAGE FLUCTUATION AND FLICKERS

Tests	Limits		Descriptions
	IEC555-3	IEC/EN 61000-3-3	
Pst	$\leq 1.0$ , Tp= 10 min.	$\leq 1.0$ , Tp= 10 min.	Short Term Flicker Indicator
Plt	N/A	$\leq 0.65$ , Tp=2 hr.	Long Term Flicker Indicator
dc	$\leq 3\%$	$\leq 3.3\%$	Relative Steady-State V-Chang
dmax	$\leq 4\%$	$\leq 4\%$	Maximum Relative V-change
d (t)	N/A	$\leq 3.3\%$ for > 500 ms	Relative V-change characteristic

#### 3.2.3.1 TEST PROCEDURE

##### a. Harmonic Current Test:

Test was performed according to the procedures specified in Clause 5.0 of IEC555-2 and/or Sub-clause 6.2 of IEC/EN 61000-3-2 depend on which standard adopted for compliance measurement.

##### b. Fluctuation and Flickers Test:

Tests was performed according to the Test Conditions/Assessment of Voltage Fluctuations specified in Clause 5.0/6.0 of IEC555-3 and/or Clause 6.0/4.0 of IEC/EN 61000-3-3 depend on which standard adopted for compliance measurement.

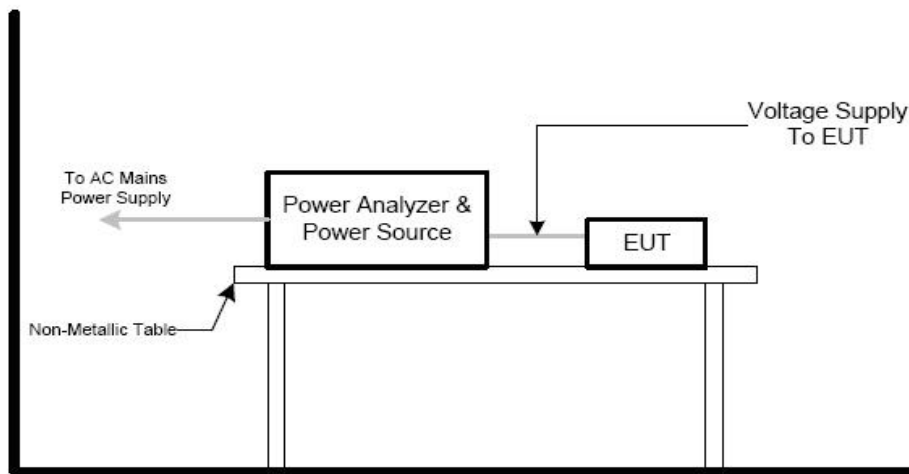
c. All types of harmonic current and/or voltage fluctuation in this report are assessed by direct measurement using flicker-meter.

d. For the actual test configuration, please refer to the related Item –EUT Test Photos.

#### 3.2.3.2 EUT OPERATING CONDITIONS

The EUT tested system was configured as the statements of **2.2** Unless otherwise a special operating condition is specified in the follows during the testing.

#### 3.2.3.3 TEST SETUP





## 3.2.4 TEST RESULTS

EUT :	Sonoff GSM/GPRS Smart Switch	Model Name :	Sonoff G1
Temperature :	25 °C	Relative Humidity :	45%
Pressure :	1010 hPa	Test Power :	AC230V/50Hz
Test Mode	Mode 1		

Test Parameter	Measurement Value	limit	Remarks
$P_{st}$	0.064	1.0	Pass
$P_{it}$	2.770	3.3	Pass
$T_{dt(s)}$	0.000	0.5	Pass
$d_{max}(\%)$	0.03%	4%	Pass
$d_c(\%)$	0.02%	3.3%	Pass



#### 4. EMC IMMUNITY TEST

##### 4.1 GENERAL PERFORMANCE CRITERIA

###### 4.1.1 PERFORMANCE CRITERIA

According To **EN 301489 -17** standard, The General Performance Criteria As Following:

Criteria	During the test	After the test
<b>A</b>	Shall operate as intended May show degradation of performance (see note 1) Shall be no loss of function Shall be no unintentional transmissions	Shall operate as intended Shall be no degradation of performance (see note 2) Shall be no loss of function Shall be no loss of stored data or user programmable functions
<b>B</b>	May show loss of function (one or more) May show degradation of performance (see note 1) No unintentional transmissions	Functions shall be self-recoverable Shall operate as intended after recovering Shall be no degradation of performance (see note 2) Shall be no loss of stored data or user programmable functions
<b>C</b>	May be loss of function (one or more)	Functions shall be recoverable by the operator Shall operate as intended after recovering Shall be no degradation of performance (see note 2)

NOTE 1: Degradation of performance during the test is understood as a degradation to a level not below a minimum performance level specified by the manufacturer for the use of the apparatus as intended. In some cases the specified minimum performance level may be replaced by a permissible degradation of performance. If the minimum performance level or the permissible performance degradation is not specified by the manufacturer then either of these may be derived from the product description and documentation (including leaflets and advertising) and what the user may reasonably expect from the apparatus if used as intended.

NOTE 2: no degradation of performance after the test is understood as any degradation below a minimum performance level specified by the manufacturer for the use of the apparatus as intended. In some cases the specified minimum performance level may be replaced by a permissible degradation of performance. After the test no change of actual operating data or user retrievable data is allowed. If the minimum performance level or the permissible performance degradation is not specified by the manufacturer then either of these may be derived from the product description and documentation (including leaflets and advertising) and what the user may reasonably expect from the apparatus if used as intended.



## PERFORMANCE FOR TT

The performance criteria B shall apply, except for voltage dips of 100 ms and voltage interruptions of 5 000 ms duration, for which performance criteria C shall apply. Tests shall be repeated with the EUT in standby mode (if applicable) to ensure that unintentional transmission does not occur. In systems using acknowledgement signals, it is recognized that an acknowledgement (ACK) or not-acknowledgement (NACK) transmission may occur, and steps should be taken to ensure that any transmission resulting from the application of the test is correctly interpreted.

## PERFORMANCE FOR TR

The performance criteria B shall apply, except for voltage dips of 100 ms and voltage interruptions of 5 000 ms duration for which performance criteria C shall apply. Where the EUT is a transceiver, under no circumstances, shall the transmitter operate unintentionally during the test. In systems using acknowledgement signals, it is recognized that an ACK or NACK transmission may occur, and steps should be taken to ensure that any transmission resulting from the application of the test is correctly interpreted.

## PERFORMANCE FOR CT

The performance criteria A shall apply. Tests shall be repeated with the EUT in standby mode (if applicable) to ensure that unintentional transmission does not occur. In systems using acknowledgement signals, it is recognized that an Acknowledgement (ACK) or Not Acknowledgement (NACK) transmission may occur, and steps should be taken to ensure that any transmission resulting from the application of the test is correctly interpreted.

## PERFORMANCE FOR CR

The performance criteria A shall apply. Where the EUT is a transceiver, under no circumstances, shall the transmitter operate unintentionally during the test. In systems using acknowledgement signals, it is recognized that an ACK or NACK transmission may occur, and steps should be taken to ensure that any transmission resulting from the application of the test is correctly interpreted.

### 4.2 GENERAL PERFORMANCE CRITERIA TEST SETUP

The EUT tested system was configured as the statements of **2.2** Unless otherwise a special operating condition is specified in the follows during the testing.



### 4.3 ESD TESTING

#### 4.3.1 TEST SPECIFICATION

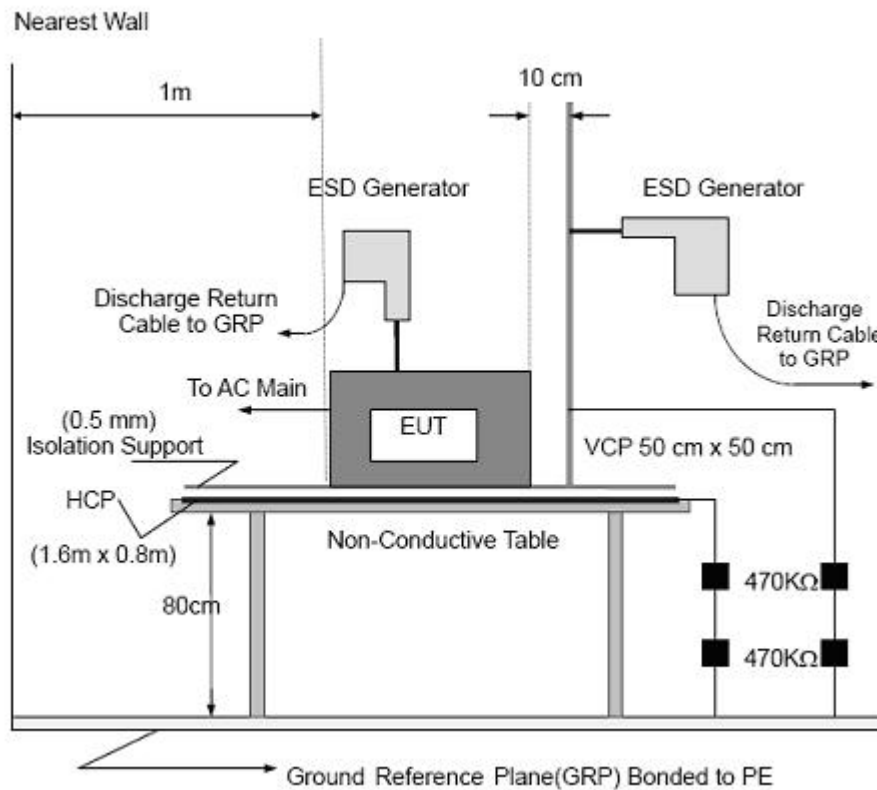
Basic Standard:	IEC/EN 61000-4-2
Discharge Impedance:	330 ohm / 150 pF
Required Performance	B
Discharge Voltage:	Air Discharge : 2kV/4kV/8kV (Direct) Contact Discharge : 2kV/4kV (Direct/Indirect)
Polarity:	Positive & Negative
Number of Discharge:	Air Discharge: min. 20 times at each test point Contact Discharge: min. 200 times in total
Discharge Mode:	AC Discharge
Discharge Period:	1 second minimum

#### 4.3.2 TEST PROCEDURE

The test generator necessary to perform direct and indirect application of discharges to the EUT in the following manner:

- a. Contact discharge was applied to conductive surfaces and coupling planes of the EUT.  
During the test, it was performed with single discharges. For the single discharge time between successive single discharges was at least 1 second. The EUT shall be exposed to at least 200 discharges, 100 each at negative and positive polarity, at a minimum of four test points. One of the test points shall be subjected to at least 50 indirect discharges to the center of the front edge of the horizontal coupling plane. The remaining three test points shall each receive at least 50 direct contact discharges.  
If no direct contact test points are available, then at least 200 indirect discharges shall be applied in the indirect mode. Test shall be performed at a maximum repetition rate of one discharge per second.  
Vertical Coupling Plane (VCP):  
The coupling plane, of dimensions 0.5m x 0.5m, is placed parallel to, and positioned at a distance 0.1m from, the EUT, with the Discharge Electrode touching the coupling plane.  
The four faces of the EUT will be performed with electrostatic discharge.  
Horizontal Coupling Plane (HCP):  
The coupling plane is placed under to the EUT. The generator shall be positioned vertically at a distance of 0.1m from the EUT, with the Discharge Electrode touching the coupling plane.  
The four faces of the EUT will be performed with electrostatic discharge.
- b. Air discharges at insulation surfaces of the EUT.  
It was at least ten single discharges with positive and negative at the same selected point.
- c. For the actual test configuration, please refer to the related Item –EUT Test Photos.

### 4.3.3 TEST SETUP



Note:

#### TABLE-TOP EQUIPMENT

The configuration consisted of a wooden table 0.8 meters high standing on the Ground Reference Plane. The GRP consisted of a sheet of aluminum at least 0.25mm thick, and 2.5 meters square connected to the protective grounding system. A Horizontal Coupling Plane (1.6m x 0.8m) was placed on the table and attached to the GRP by means of a cable with 940k total impedance. The equipment under test, was installed in a representative system as described in section 7 of IEC /EN 61000-4-2, and its cables were placed on the HCP and isolated by an insulating support of 0.5mm thickness. A distance of 1-meter minimum was provided between the EUT and the walls of the laboratory and any other metallic structure.

#### FLOOR-STANDING EQUIPMENT

The equipment under test was installed in a representative system as described in section 7 of IEC/EN 61000-4-2, and its cables were isolated from the Ground Reference Plane by an insulating support of 0.1-meter thickness. The GRP consisted of a sheet of aluminum that is at least 0.25mm thick, and 2.5meters square connected to the protective grounding system and extended at least 0.5 meters from the EUT on all sides.



#### 4.3.4 TEST RESULTS

EUT :	Sonoff GSM/GPRS Smart Switch	Model Name :	Sonoff G1
Temperature :	25 °C	Relative Humidity :	45%
Pressure :	1010 hPa	Test Power :	AC230V/50Hz
Test Mode	Mode1		

Mode	Air Discharge								Contact Discharge								Observation	Criterion	Result
Test level (kV)	4		8		10		15		2		4		6		8				
Test Location	+	-	+	-	+	-	+	-	+	-	+	-	+	-	+	-			
HCP									A	A	A	A					TT,TR	B	PASS
VCP									A	A	A	A							PASS
port	A	A	A	A															PASS
enclosure									A	A	A	A							PASS
button									A	A	A	A							PASS
slot	A	A	A	A															PASS

Note:

- 1) P/N denotes the Positive/Negative polarity of the output voltage.
- 2) Test condition:  
Direct / Indirect (HCP/VCP) discharges: Minimum 50 times (Positive/Negative) at each point. Air discharges: Minimum 10 times (Positive/Negative) at each point.
- 3) N/A - denotes test is not applicable in this test report
- 4) There was not any unintentional transmission in standby mode



#### 4.4 RS TESTING

##### 4.4.1 TEST SPECIFICATION

Basic Standard:	IEC/EN 61000-4-3
Required Performance	A
Frequency Range:	80 MHz - 1000 MHz ,1400MHz-2700MHz
Field Strength:	3 V/m
Modulation:	1kHz Sine Wave, 80%, AM Modulation
Frequency Step:	1 % of fundamental
Polarity of Antenna:	Horizontal and Vertical
Test Distance:	3 m
Antenna Height:	1.5 m
Dwell Time:	at least 3 seconds

##### 4.4.2 TEST PROCEDURE

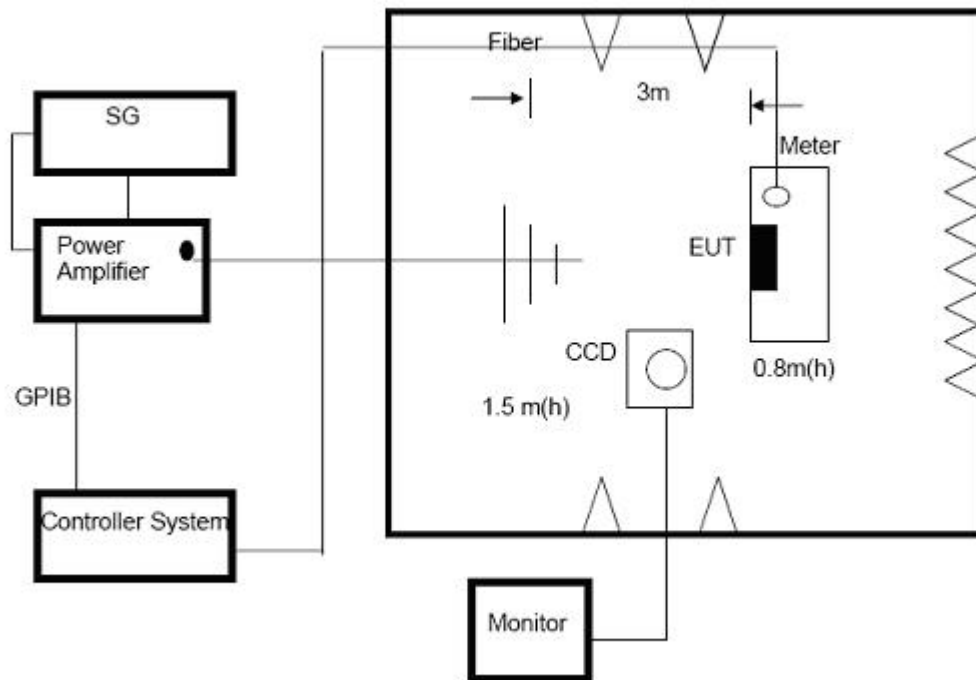
The EUT and support equipment, which are placed on a table that is 0.8 meter above ground and the testing was performed in a fully-anechoic chamber.

The testing distance from antenna to the EUT was 3 meters.

The other condition as following manner:

- The field strength level was 3V/m.
- The frequency range is swept from 80 MHz to 1000 MHz, & 1400MHz - 2700MHz with the signal 80%amplitude modulated with a 1kHz sine wave. The rate of sweep did not exceed 1.5x 10-3 decade/s. Where the frequency range is swept incrementally, the step size was 1% of fundamental.
- Sweep Frequency 900 MHz, with the Duty Cycle:1/8 and Modulation: Pulse 217 Hz(if applicable)
- The dwell time at each frequency shall be not less than the time necessary for the EUT to be able to respond.
- The test was performed with the EUT exposed to both vertically and horizontally polarized fields on each of the four sides.
- For the actual test configuration, please refer to the related Item –EUT Test Photos.

#### 4.4.3 TEST SETUP



Note:

##### TABLE-TOP EQUIPMENT

The EUT installed in a representative system as described in section 7 of IEC/EN 61000-4-3 was placed on a non-conductive table 0.8 meters in height. The system under test was connected to the power and signal wire according to relevant installation instructions.

##### FLOOR-STANDING EQUIPMENT

The EUT installed in a representative system as described in section 7 of IEC/EN 61000-4-3 was placed on a non-conductive wood support 0.1 meters in height. The system under test was connected to the power and signal wire according to relevant installation instructions.



## 4.4.4 TEST RESULTS

EUT :	Sonoff GSM/GPRS Smart Switch	Model Name :	Sonoff G1
Temperature :	25 °C	Relative Humidity :	45%
Pressure :	1010 hPa	Test Power :	AC230V/50Hz
Test Mode	Mode1		

Frequency Range (MHz)	RF Field Position	R.F. Field Strength	Azimuth	Observation	Perform. Criteria	Results	Judgment
80~1000 1400-2700	H / V	3 V/m (rms) AM Modulated 1000Hz, 80%	Front	CT,CR	A	A	PASS
			Rear				
			Left				
			Right				

Note:

- 1) P/N denotes the Positive/Negative polarity of the output voltage.
- 2) N/A - denotes test is not applicable in this test report.
- 3) There was no change operated with initial operating during the test.
- 4) There was not any unintentional transmission in standby mode



#### 4.5 EFT/BURST TESTING

##### 4.5.1 TEST SPECIFICATION

Basic Standard:	IEC/EN 61000-4-4
Required Performance	B
Test Voltage:	Power Line : 1 kV Signal/Control Line : 0.5 KV
Polarity:	Positive & Negative
Impulse Frequency:	5 kHz
Impulse Wave shape :	5/50 ns
Burst Duration:	15 ms
Burst Period:	300 ms
Test Duration:	Not less than 1 min.

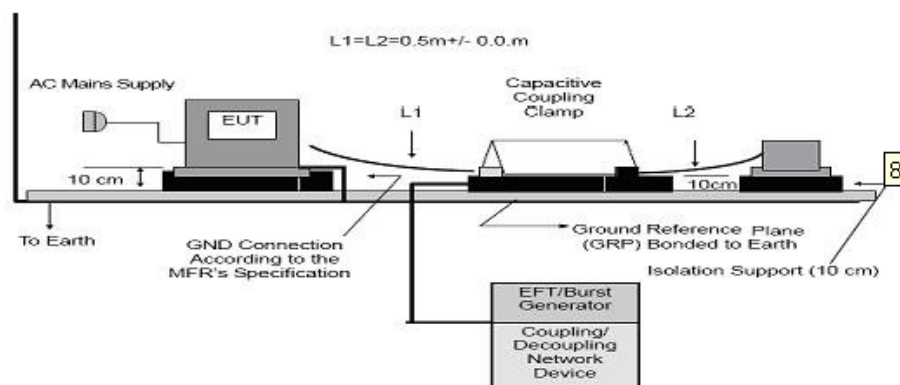
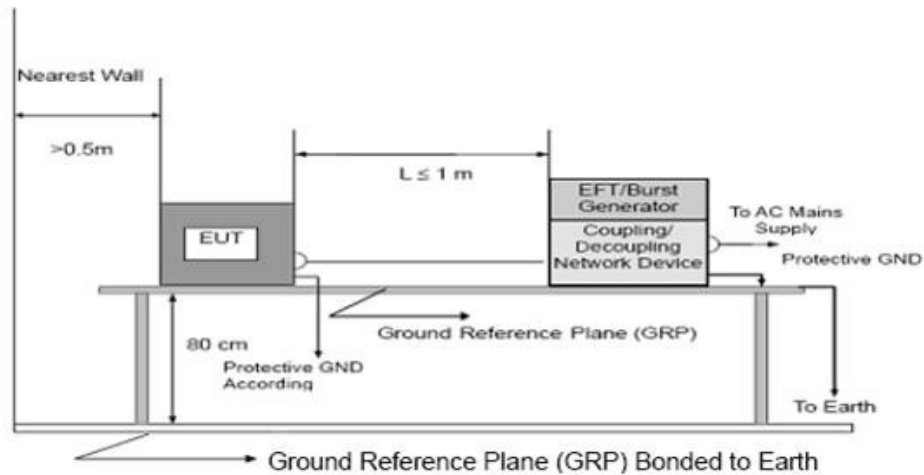
##### 4.5.2 TEST PROCEDURE

The EUT and support equipment, are placed on a table that is 0.8 meter above a metal ground plane measured 1m\*1m min. and 0.65mm thick min.

The other condition as following manner:

- The length of power cord between the coupling device and the EUT should not exceed 1 meter.
- Both positive and negative polarity discharges were applied.
- The duration time of each test sequential was 1 minute
- For the actual test configuration, please refer to the related Item –EUT Test Photos.

### 4.5.3 TEST SETUP



Note:

#### TABLE-TOP EQUIPMENT

The configuration consisted of a wooden table (0.8m high) standing on the Ground Reference Plane. The GRP consisted of a sheet of aluminum (at least 0.25mm thick and 2.5m square) connected to the protective grounding system. A minimum distance of 0.5m was provided between the EUT and the walls of the laboratory or any other metallic structure.

#### FLOOR-STANDING EQUIPMENT

The EUT installed in a representative system as described in section 7 of IEC/EN 61000-4-4 and its cables, were isolated from the Ground Reference Plane by an insulating support that is 0.1-meter thick. The GRP consisted of a sheet of aluminum (at least 0.25mm thick and 2.5m square) connected to the protective grounding system.



#### 4.5.4 TEST RESULTS

EUT :	Sonoff GSM/GPRS Smart Switch	Model Name :	Sonoff G1
Temperature :	25 °C	Relative Humidity :	45%
Pressure :	1010 hPa	Test Power :	AC230V/50Hz
Test Mode	Mode1		

Coupling Line		Test level (KV)I								Observation	Criterion	Result
		0.5		1		2		4				
		+	-	+	-	+	-	+	-			
AC Line	L	A	A	A	A					TT,TR	B	PASS
	N	A	A	A	A							PASS
	PE											
	L+N	A	A	A	A							PASS
	L+PE											
	N+PE											
	L+N+PE											
DC Line												
Signal Line												

Note:

- 1) P/N denotes the Positive/Negative polarity of the output voltage.
- 2) N/A - denotes test is not applicable in this test report.
- 3) There was not any unintentional transmission in standby mode



## 4.6 SURGE TESTING

### 4.6.1 TEST SPECIFICATION

Basic Standard:	IEC/EN 61000-4-5
Required Performance	B
Wave-Shape:	Combination Wave 1.2/50 us Open Circuit Voltage 8 /20 us Short Circuit Current
Test Voltage:	Power Line : 0.5 kV, 1 kV, 2 kV
Surge Input/Output:	L1-L2, L1-PE, L2-PE
Generator Source:	2 ohm between networks
Impedance:	12 ohm between network and ground
Polarity:	Positive/Negative
Phase Angle:	0 /90/180/270
Pulse Repetition Rate:	1 time / min. (maximum)
Number of Tests:	5 positive and 5 negative at selected points

### 4.6.2 TEST PROCEDURE

#### a. For EUT power supply:

The surge is to be applied to the EUT power supply terminals via the capacitive coupling network. Decoupling networks are required in order to avoid possible adverse effects on equipment not under test that may be powered by the same lines, and to provide sufficient decoupling impedance to the surge wave. The power cord between the EUT and the coupling/decoupling networks shall be 2meters in length (or shorter).

#### b. For test applied to unshielded unsymmetrically operated interconnection lines of EUT:

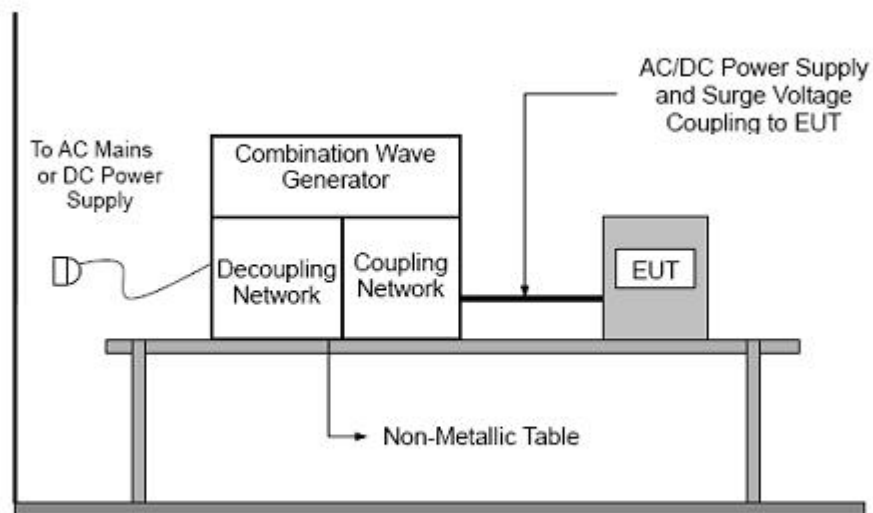
The surge is applied to the lines via the capacitive coupling. The coupling /decoupling networks shall not influence the specified functional conditions of the EUT. The interconnection line between the EUT and the coupling/decoupling networks shall be 2 meters in length (or shorter).

#### c. For test applied to unshielded symmetrically operated interconnection /telecommunication lines of EUT:

The surge is applied to the lines via gas arrestors coupling. Test levels below the ignition point of the coupling arrestor cannot be specified. The interconnection line between the EUT and the coupling/decoupling networks shall be 2 meters in length (or shorter).

#### d. For the actual test configuration, please refer to the related Item –EUT Test Photos.

#### 4.6.3 TEST SETUP





#### 4.6.4 TEST RESULTS

EUT :	Sonoff GSM/GPRS Smart Switch	Model Name :	Sonoff G1
Temperature :	25 °C	Relative Humidity :	45%
Pressure :	1010 hPa	Test Power :	AC230V/50Hz
Test Mode	Mode1		

Coupling Line			Test level (KV)I								Observatio n	Criterion	Result
			0.5		1		2		4				
			+	-	+	-	+	-	+	-			
AC Line	L-N	0°	A	A	B	B					TT,TR	B	PASS
		90°	A	A	B	B							
		180°	A	A	B	B							
		270°	A	A	B	B							
	L-PE	0°											
		90°											
		180°											
		270°											
	N-PE	0°											
		90°											
		180°											
		270°											
DC Line													
Signal Line													

Note:

- 1) Polarity and Numbers of Impulses: 5 Pst / Ngst at each tested mode
- 2) N/A - denotes test is not applicable in this Test Report
- 3) There was not any unintentional transmission in standby mode



## 4.7 INJECTION CURRENT TESTING

### 4.7.1 TEST SPECIFICATION

Basic Standard:	IEC/EN 61000-4-6
Required Performance	A
Frequency Range:	0.15 MHz - 80 MHz
Field Strength:	3 Vr.m.s.
Modulation:	1kHz Sine Wave, 80%, AM Modulation
Frequency Step:	1 % of fundamental
Dwell Time:	at least 3 seconds

### 4.7.2 TEST PROCEDURE

The EUT and support equipment, are placed on a table that is 0.8 meter above a metal ground plane measured 1m\*1m min. and 0.65mm thick min.

The other condition as following manner:

- The field strength level was 3V.
- The frequency range is swept from 150 KHz to 80 MHz, with the signal 80%amplitude modulated with a 1kHz sine wave. The rate of sweep did not exceed  $1.5 \times 10^{-3}$  decade/s. Where the frequency range is swept incrementally, the step size was 1% of fundamental.
- The dwell time at each frequency shall be not less than the time necessary for the EUT to be able to respond.
- For the actual test configuration, please refer to the related Item –EUT Test Photos.





## 4.7.4 TEST RESULTS

EUT :	Sonoff GSM/GPRS Smart Switch	Model Name :	Sonoff G1
Temperature :	25 °C	Relative Humidity :	45%
Pressure :	1010 hPa	Test Power :	AC230V/50Hz
Test Mode	Mode1		

Test Ports (Mode)	Freq. Range (MHz)	Field Strength Azimuth	Observation	Perform. Criteria	Results	Judgment
Input/ Output AC. Power Port	0.18-80	3 V/m (rms) AM Modulated 1000Hz, 80%	<b>CT,CR</b>	<b>A</b>	<b>A</b>	<b>PASS</b>
Input/ Output DC. Power Port	0.18-80		<b>N/A</b>	<b>N/A</b>	<b>N/A</b>	<b>N/A</b>
Signal Line	0.18-80		<b>N/A</b>	<b>N/A</b>	<b>N/A</b>	<b>N/A</b>

Note: "A" stand for, during test, operate as intended no loss of function, no degradation of performance, no unintentional transmissions and after test, no degradation of performance, no loss of function, no loss of stored data or user programmable functions.

## 4.8 VOLTAGE INTERRUPTION/DIPS TESTING

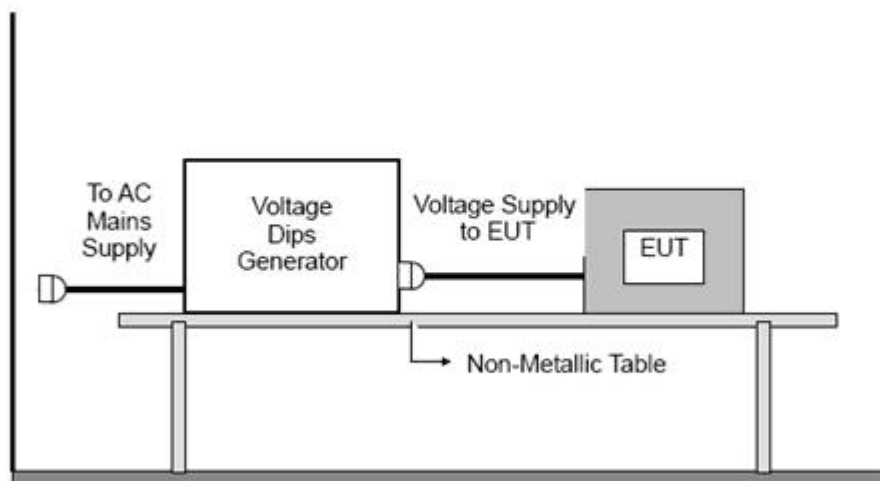
### 4.8.1 TEST SPECIFICATION

Basic Standard:	IEC/EN 61000-4-11
Required Performance	100% reduction, 0.5 Cycle 100% reduction, 1.0 Cycle 30% reduction, 25 Cycles
Voltage Interruptions:	100% reduction, 250 Cycles
Test Duration Time:	Minimum three test events in sequence
Interval between Event:	Minimum ten seconds
Phase Angle:	0°/45°/90°/135°/180°/225°/270°/315°/360°
Test Cycle:	3 times

### 4.8.2 TEST PROCEDURE

The EUT shall be tested for each selected combination of test levels and duration with a sequence of three dips/interruptions with intervals of 10 s minimum (between each test event). Each representative mode of operation shall be tested. Abrupt changes in supply voltage shall occur at zero crossings of the voltage waveform.

### 4.8.3 TEST SETUP



For the actual test configuration, please refer to the related Item –EUT Test Photos.



## 4.8.4 TEST RESULTS

EUT :	Sonoff GSM/GPRS Smart Switch	Model Name :	Sonoff G1
Temperature :	25 °C	Relative Humidity :	45%
Pressure :	1010 hPa	Test Power :	AC230V/50Hz
Test Mode	Mode1		

Voltage Reduction	Duration (ms)	Observation	Perform. Criteria	Results	Judgment
Voltage dip 0%	10	TT, TR	B	A	PASS
Voltage dip 0%	20	TT, TR	B	A	PASS
Voltage dip 70%	500	TT, TR	B	A	PASS
Voltage interruptions	5000	TT, TR	C	B	PASS

Note:

- 1) There was not any unintentional transmission in standby mode

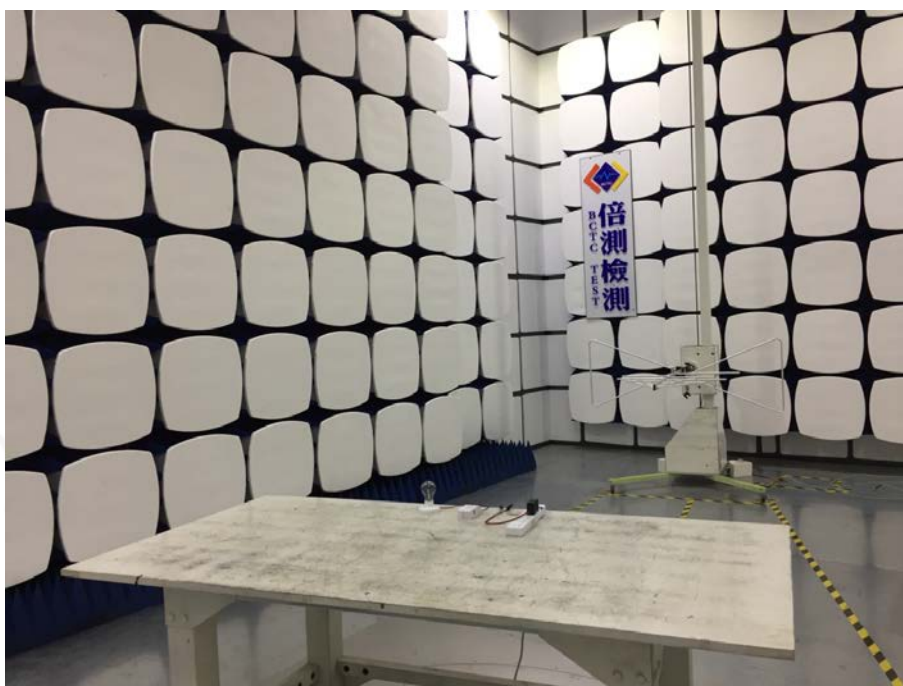


## 5 PHOTOS OF TEST SETUP

CE



RE



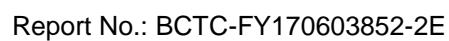


## ESD



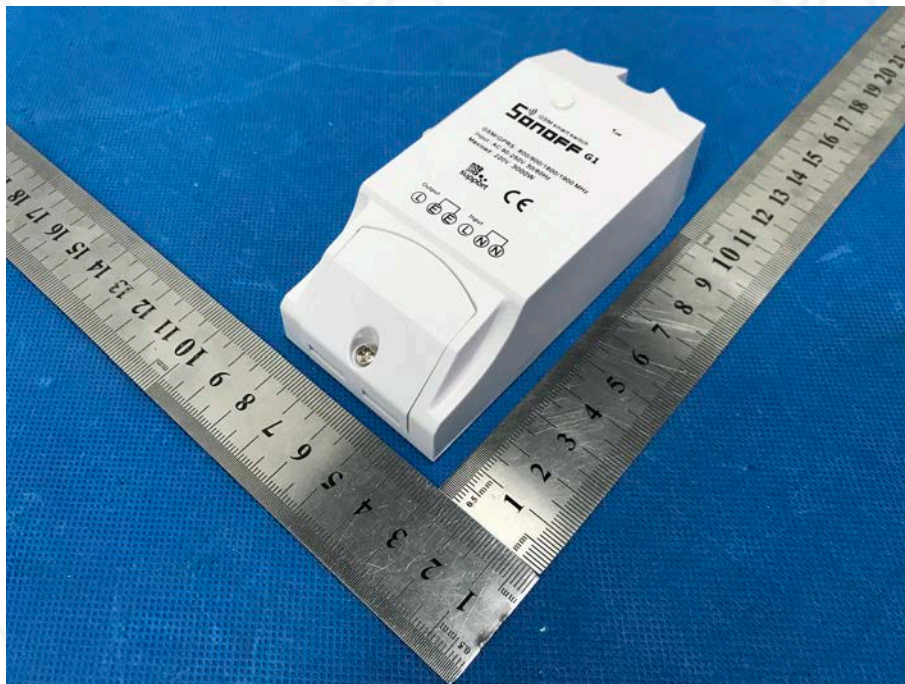
## RS



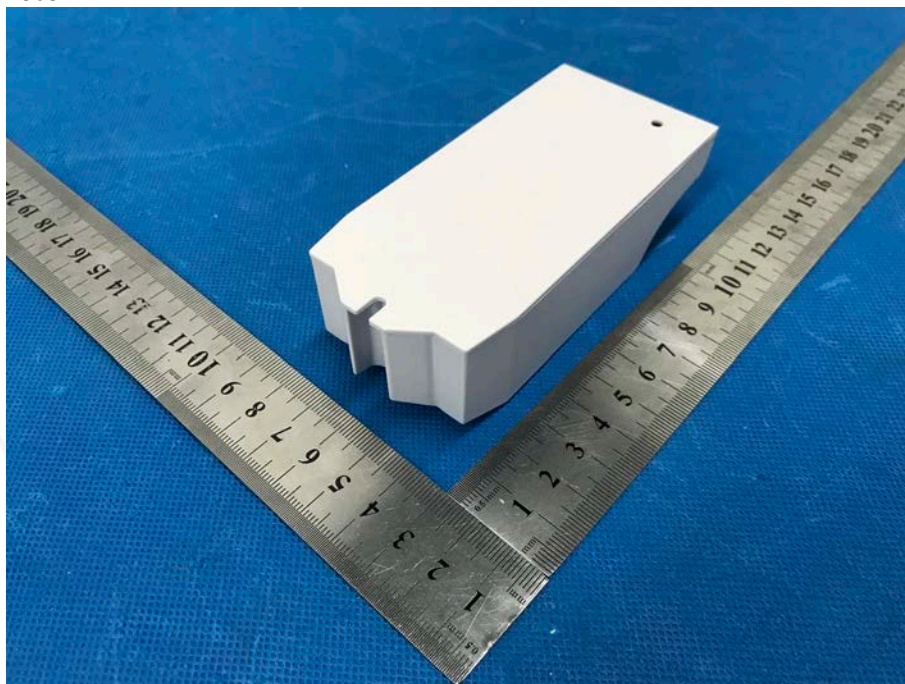
[illegible]

## 6 PHOTOS OF THE EUT

**EUT Photo 1**



**EUT Photo 2**



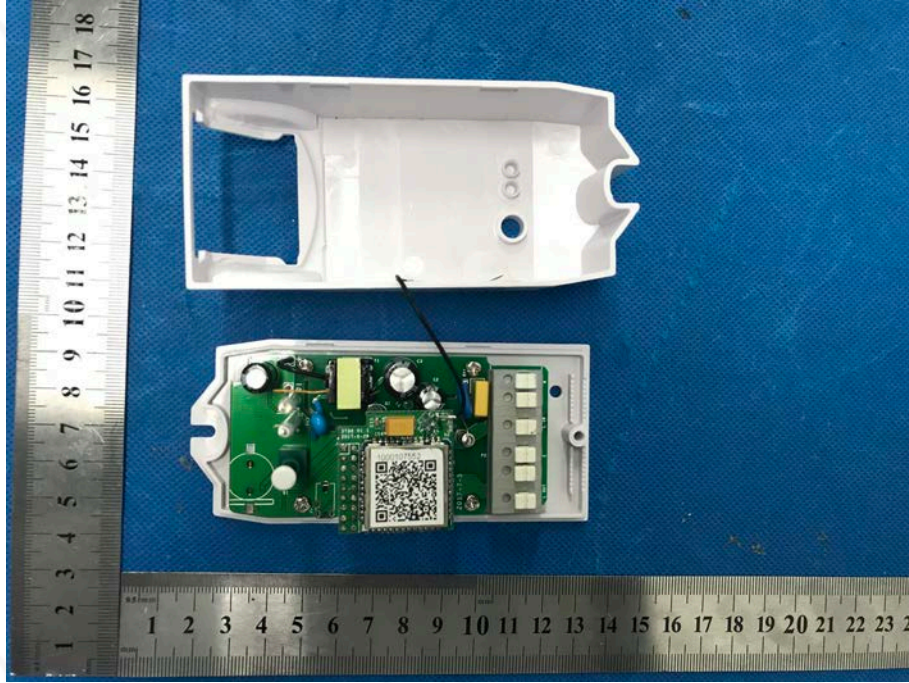
EUT Photo 3



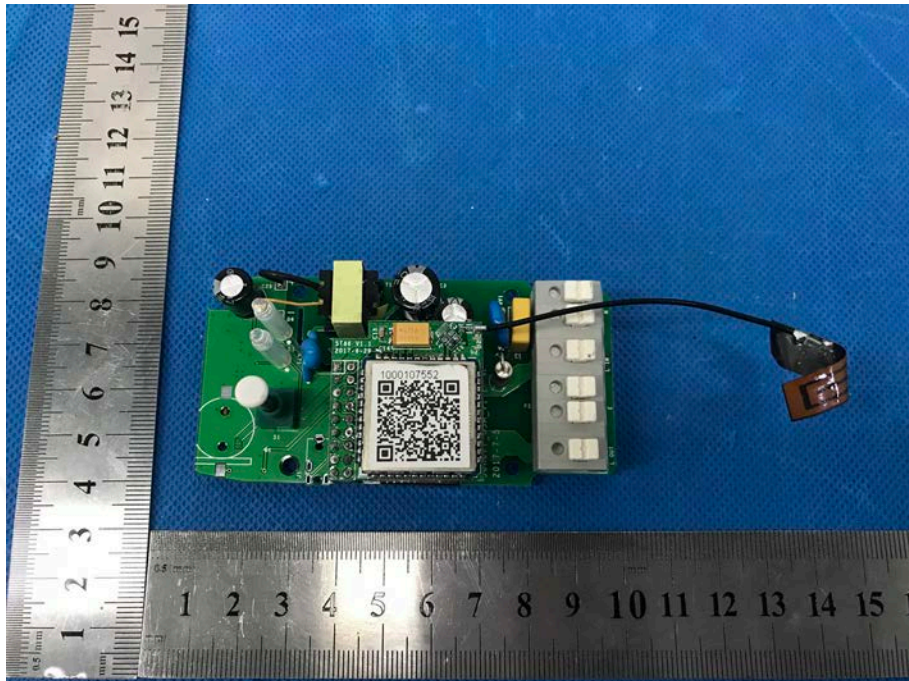
EUT Photo 4

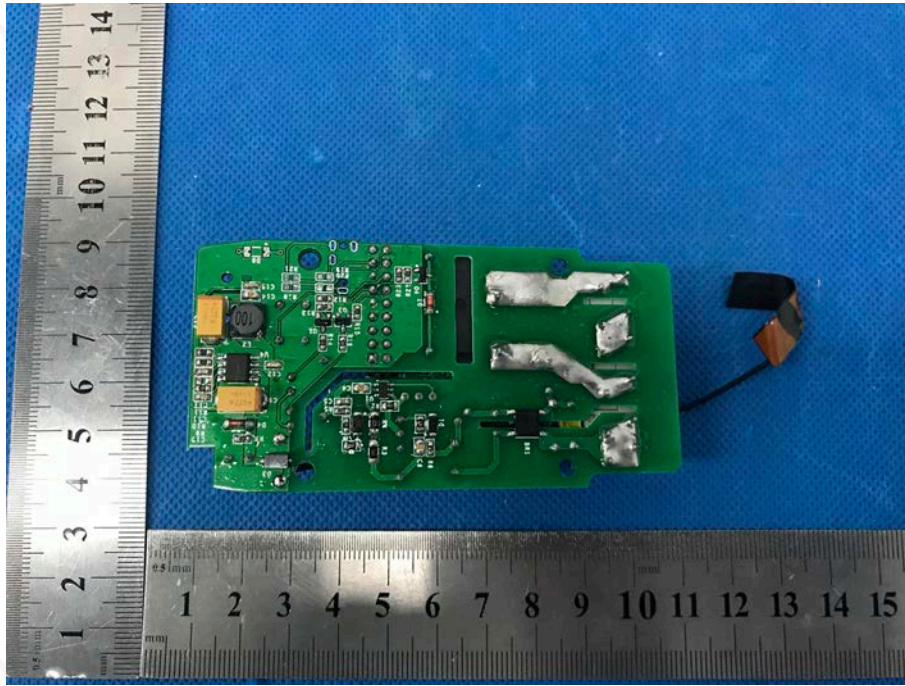
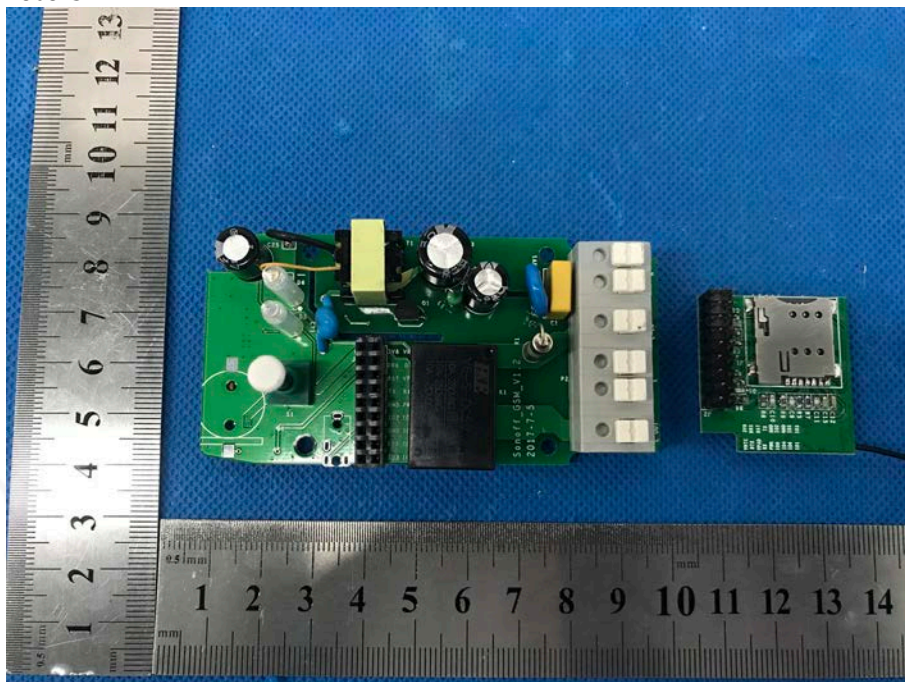


**EUT Photo 5**



**EUT Photo 6**



**EUT Photo 7****EUT Photo 8**

\*\*\*\*\* END OF REPORT \*\*\*\*\*